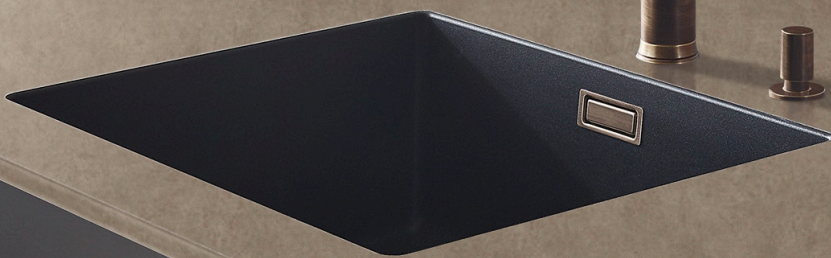


Lechner



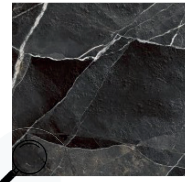
700 Terra

*Innovation trifft Beständigkeit:
Unsere Neuheiten 2024*

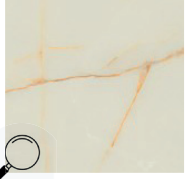
KERAMIK



672 Diamond Delight PG 2



678 Calacatta Noir PG 2



699 Aurum Touch PG 2



700 Terra PG 2

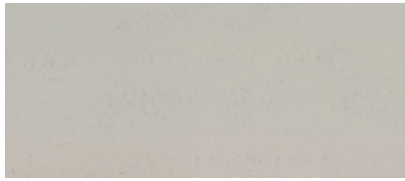
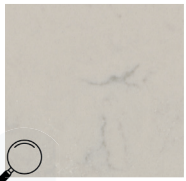
Stärke Arbeitsplatte

12, 18, 20 & 40 mm

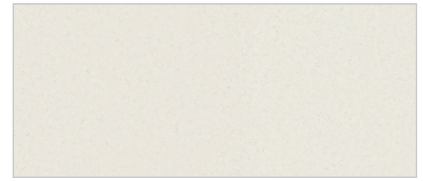
Stärke Rückwand

7, 12 & 20 mm

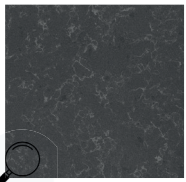
QUARZSTEIN



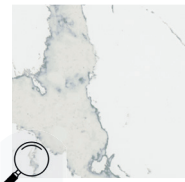
780 Elegant Silver PG 1 | In 12, 30 & 40mm verfügbar



781 Elegant Dawn PG 1 | In 12, 30 & 40mm verfügbar



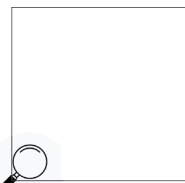
782 Elegant Night PG 1 | In 12, 30 & 40mm verfügbar



828 Calacatta White PG 2 | In 20mm verfügbar



838 Nero Lucidato PG 1 | Jetzt auch in 20mm verfügbar



804 Solid white | Jetzt auch in 12mm verfügbar

DEKTON®



923 Reverie PG 3

Stärke Arbeitsplatte & Rückwand

20 mm

NATURSTEIN



022 & 023 Nero Assoluto Deluxe | poliert & strukturiert PG 5



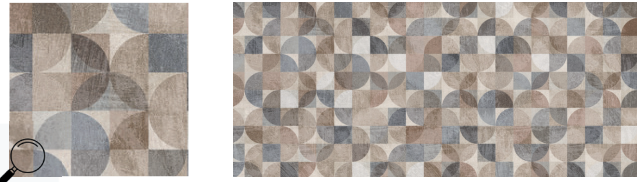
016 & 024 Nautic White | poliert & strukturiert PG 2

Stärke Arbeitsplatte	20, 30 & 40 mm
Stärke Rückwand	20 mm

GLAS



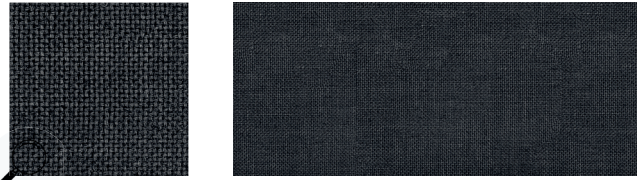
N45 Highland Horizon



N44 Ornaments



N42 Golden Swirl



N43 Dark Fabric

... und viele weitere tolle Motive

Stärke Rückwand	6 & 16 mm
-----------------	-----------

LAMINAT



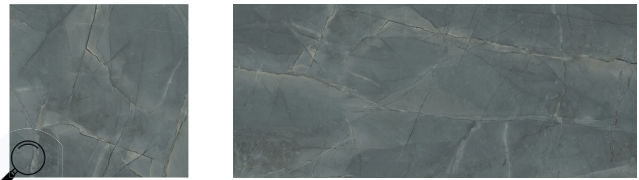
235 New Vermont PG 1



236 Serena Stone PG 1



237 Sandstone Waves PG 1



218 Dark Marble PG C+S



219 Cimone PG C+S

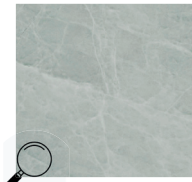


220 Grey Aperol PG C+S

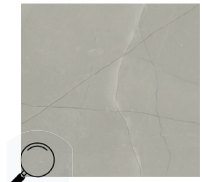
LAMINAT



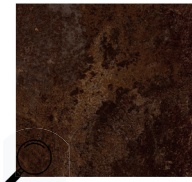
221 Oxid Slate PG C+S



222 Norwegian Marble PG C+S



224 Light Marble PG C+S



225 Romano Nuovo PG C+S



226 Sand Oak PG C+S



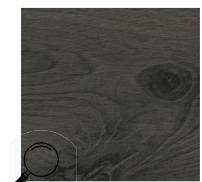
227 Anthracite Pine PG C+S



229 Scandic Teak PG C+S



230 Betula PG C+S



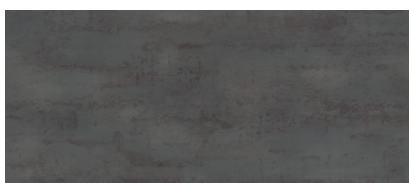
231 Craftsman Oak PG C+S



232 Larfinity PG C+S



233 Tempered Steel PG C+S



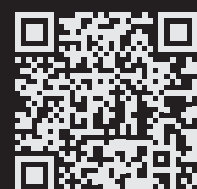
Stärke Arbeitsplatte	18 & 40 mm
Stärke Rückwand	18 mm

...zum vertrauten Preis!

Bestellbar ab 01.01.2024

D. Lechner GmbH
Erlbacher Straße 112
91542 Rothenburg o. d. Tauber
DEUTSCHLAND

Tel. +49 9861 701-0
info@lechner-ag.de
www.mylechner.de



Farbabweichungen und Irrtümer ausgeschlossen.

06/2023