



Installation Instructions Glass



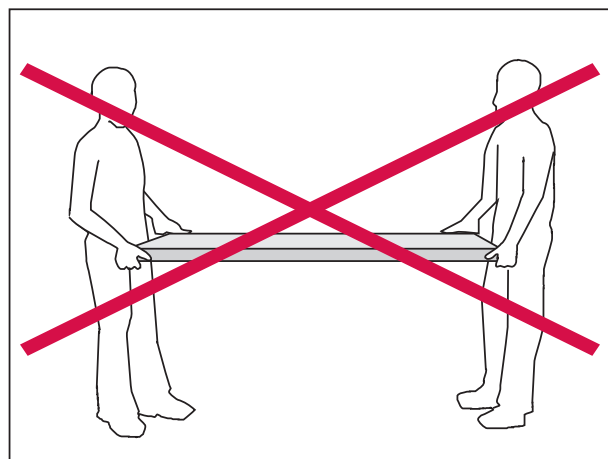
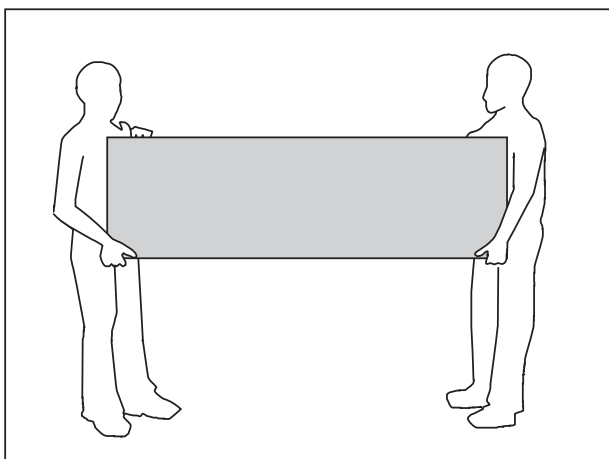
Installation Instructions glass

Herewith please find our assembling instructions which enable you to install your Lechner products by yourself. These instructions will make the installation of worktops and back walls quick and easy.

Caution: Glass worktops cannot be drilled or cut on site (this would irreparably damage them)!

Worktop-overhangs exceeding 25 cm need to be supported.

How to carry Lechner products correctly



Only carry worktops and back walls vertically

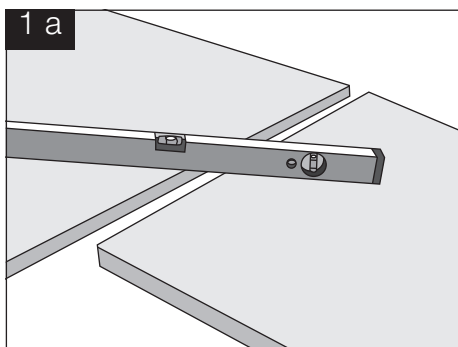
INDEX

Worktops, thickness approx. 12 mm	4-6
Worktops, other thicknesses	7-10
Backwalls, thickness approx. 6 mm	10-11
Backwalls, thickness approx. 12 mm	12-13
Backwalls, thickness approx. 16 mm	14-15
Wall connection profiles	16

Worktops, thickness approx. 12 mm

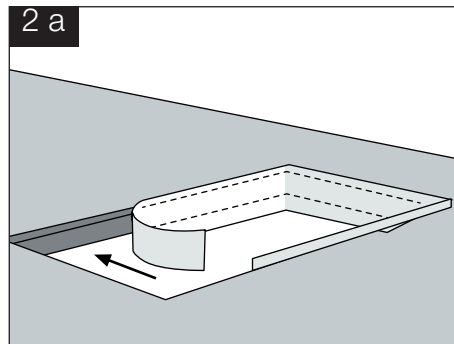
1. Worktop installation

- a. Position the worktops on top of the aligned base units. Compensate differences in height with a shim



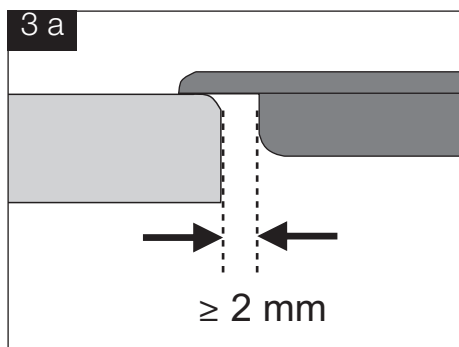
2. Factory produced cut-outs - vapour strip

- a. Apply tape along the entire surface of the cut-out



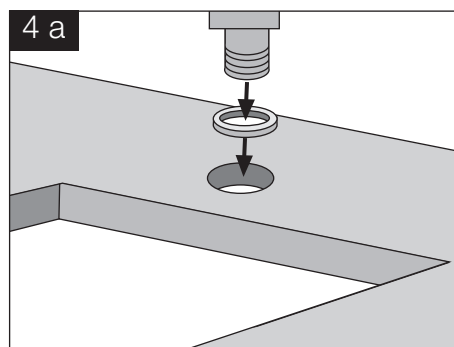
3. Appliances

- a. Maintain a 2 mm gap between hob and cut-out



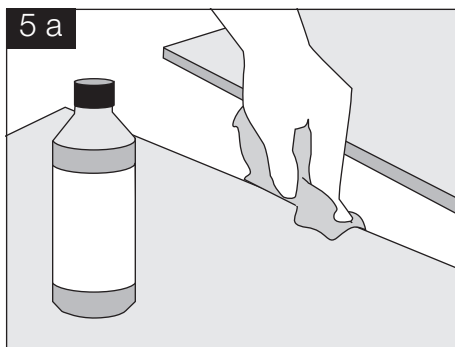
4. Fittings

- a. Assemble the fittings by using the sealing rings supplied by manufacturer. Ensure the tap gasket is fitted correctly and that the tap body does not come into contact with the glass

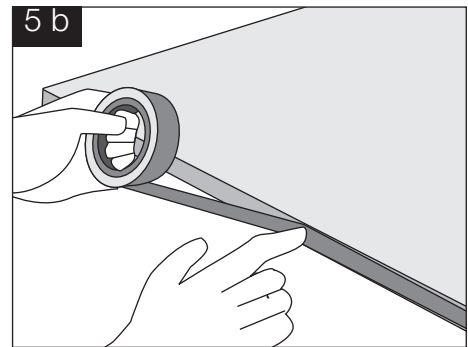


5. Butt joint fixing

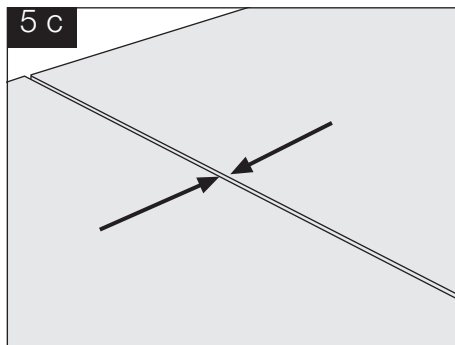
a. Clean joints



b. Apply the provided self-adhesive silicone strip to the edge. Remove the protective backing

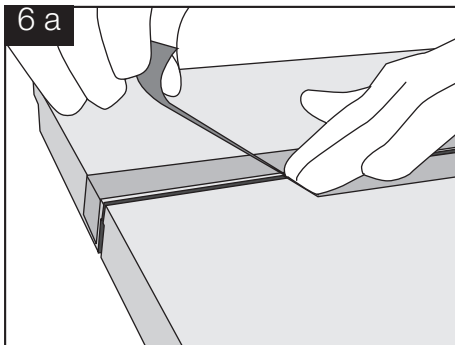


c. Join worktops

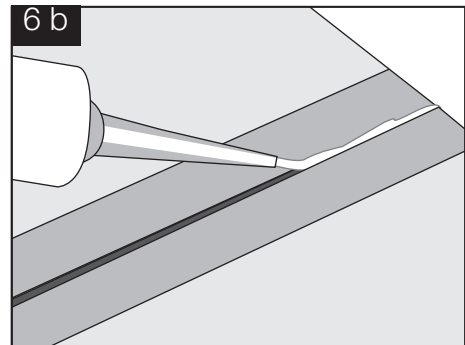


6. Joint sealing

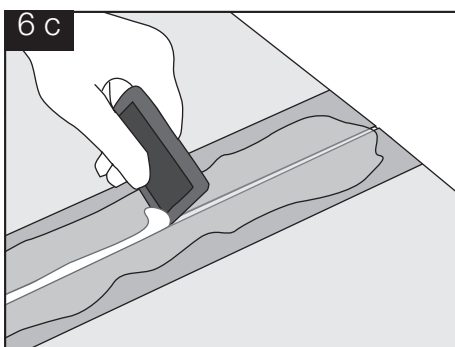
a. Mask off joints



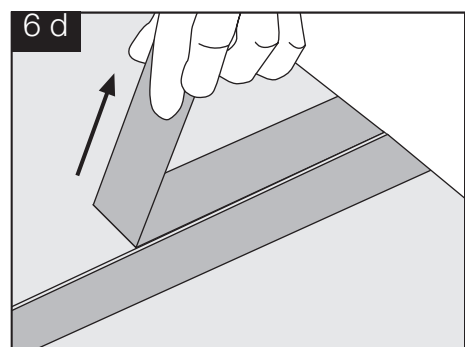
b. Seal the panel join with glass-silicone in the matching colour



c. To remove protruding silicone, coat with water and detergent mix before using a suitable scraper

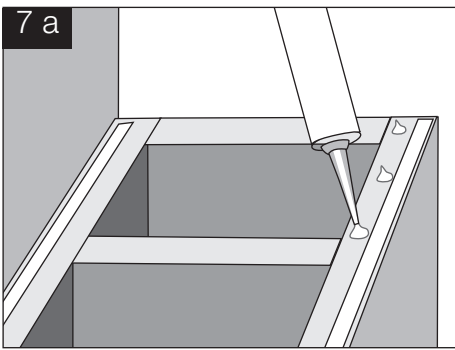


d. Remove the masking tape

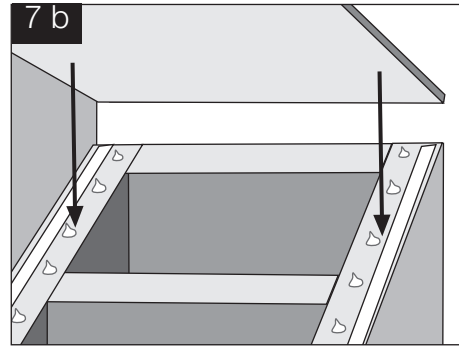


7. Fixing the worktops to the base units

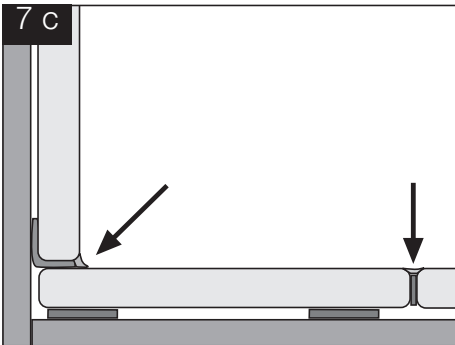
a. Apply glass-silicone to the base units



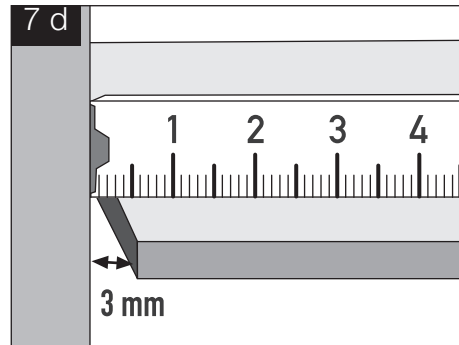
b. Place the worktops onto the base units



c. Do not assemble glass directly onto glass

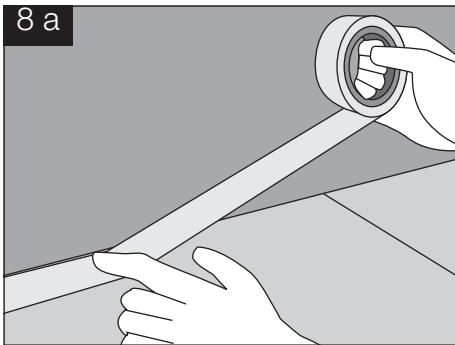


d. Gap from wall should be approx. 3 mm

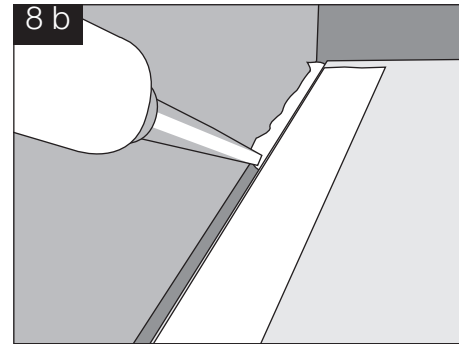


8. Upstand sealing

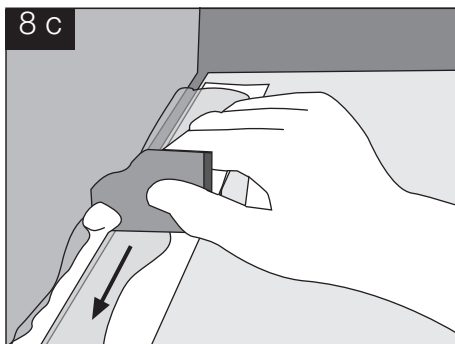
a. Mask off the back edges of the worktops



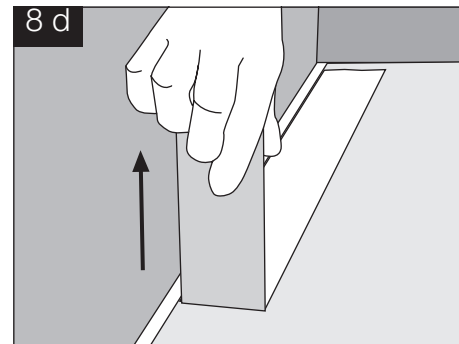
b. Seal off the joint between the back wall and work surface with glass-silicone in the matching colour



c. To remove protruding silicone, coat with water and detergent mix before using a suitable scraper



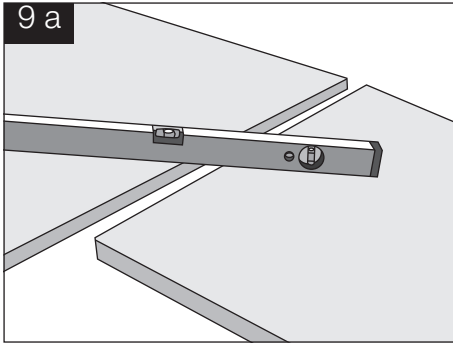
d. Remove the masking tape



Worktops, other thicknesses

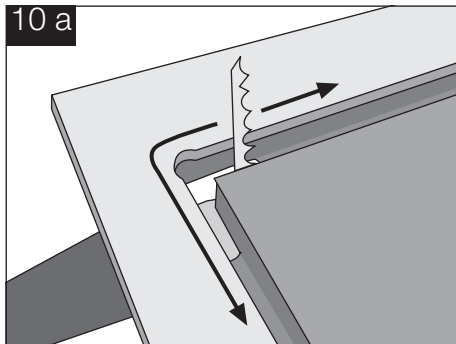
9. Worktop installation

- Position the worktops on top of the aligned base units. Compensate differences in height with a shim

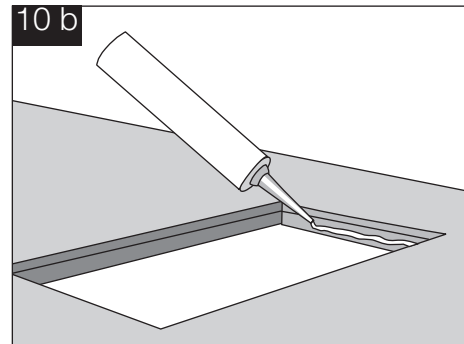


10. Cut-outs on site

- Finish off the premilled cut-out with a jigsaw. Caution: Do not damage the glass surface!

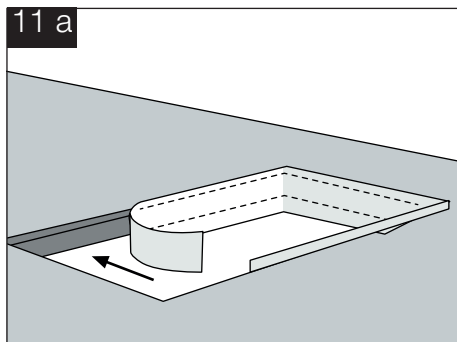


- Cut-out edges are to be sealed and made watertight with glass-silicone. Apply aluminium adhesive tape along the entire surface of the cut-out.

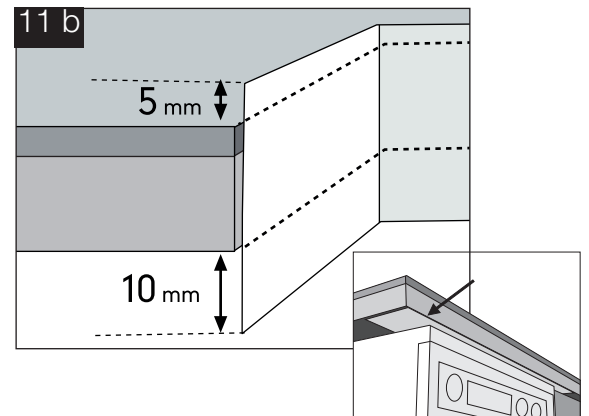


11. Factory produced cut-outs – vapour strip

- Apply tape along the entire surface of the cut-out

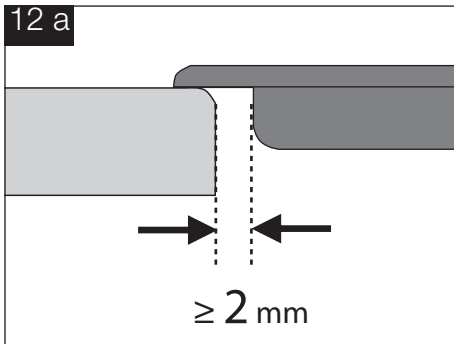


- Apply the vapour strip supplied by the appliance manufacturer. Apply aluminium adhesive tape below vapour panel. Possibly pre-drill the base board before applying the dishwasher steam plate



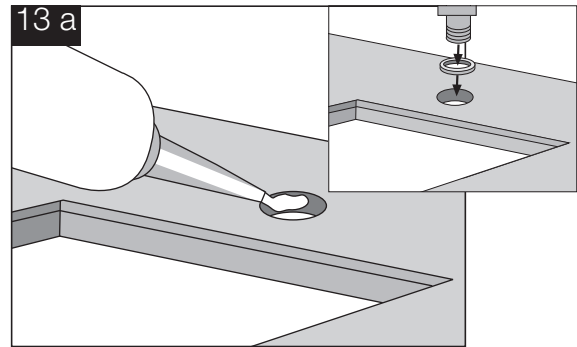
12. Appliances

- a. Maintain a 2 mm gap between hob and cut-out



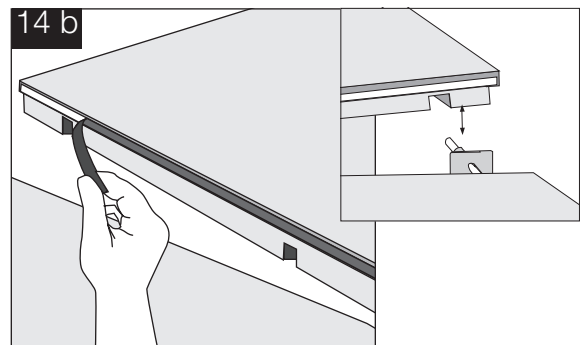
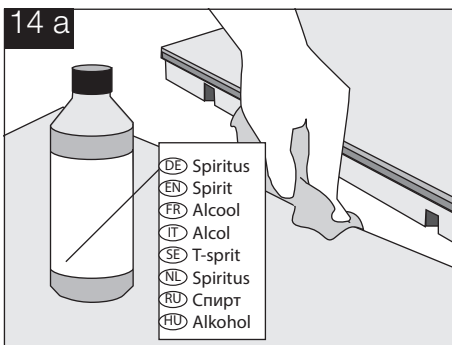
13. Fittings

- a. Make tap-hole drillings watertight using silicone. Assemble the fixings by using the sealing rings supplied by manufacturer. Ensure the tap gasket is fitted correctly and that the tap body does not come into contact with the glass



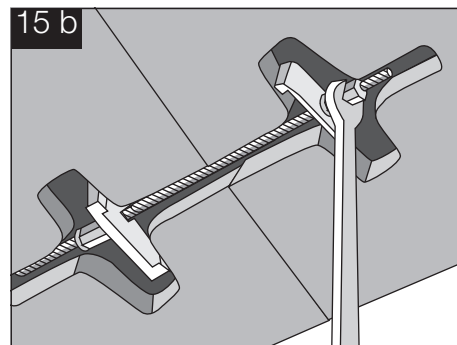
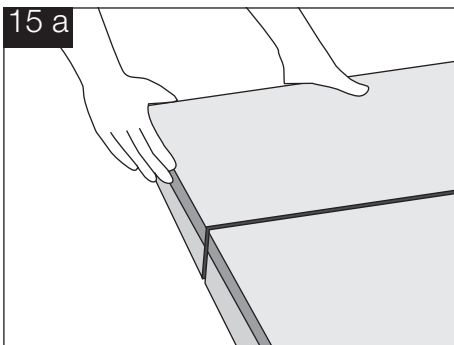
14. Butt joint fixing

- a. Clean joints
- b. A joint is supplied by the factory with a silicone strip. Remove the protective backing. Join the worktops



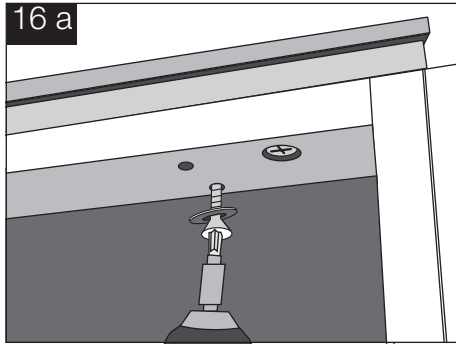
15. Joint alignment

- a. Align and position the worktops
- b. Tighten the worktop bolts

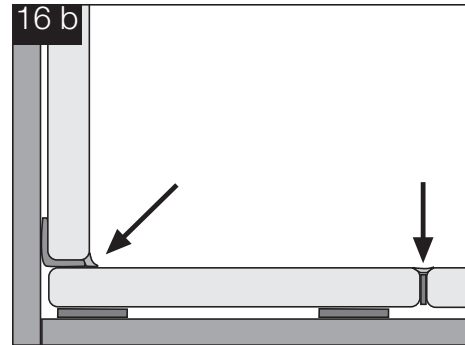


16. Fixing the worktops to the base units

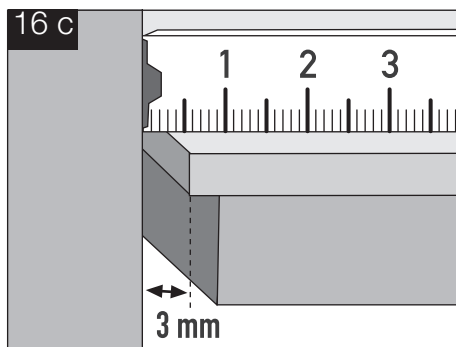
- a. Fix the worktops at various points through the top rail / surface of the base units (worktops may have to be predrilled)



- b. Do not assemble glass directly onto glass

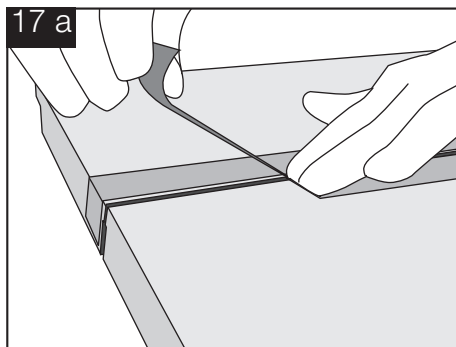


- c. Gap from the wall should be approx. 3 mm

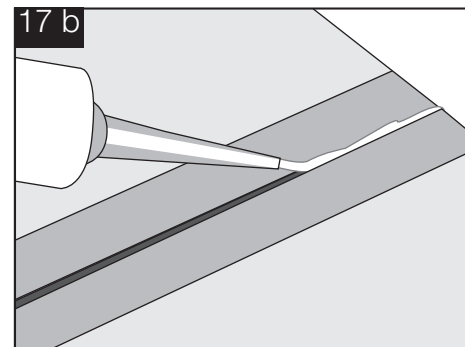


17. Joint sealing

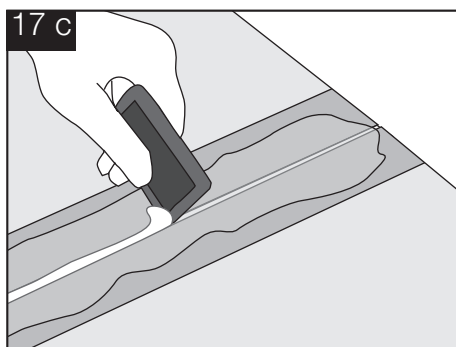
- a. Mask off joints



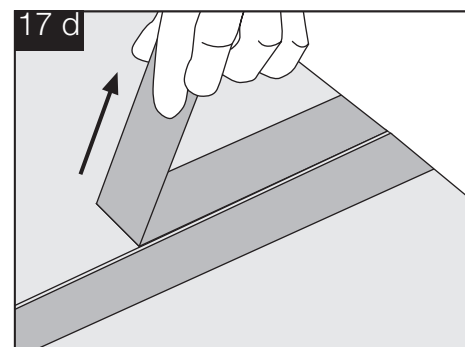
- b. Seal the panel join with glass-silicone in the matching colour



- c. To remove protruding silicone, coat with water and detergent mix before using a suitable scraper

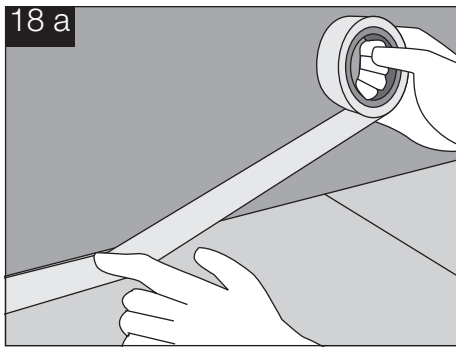


- d. Remove the masking tape

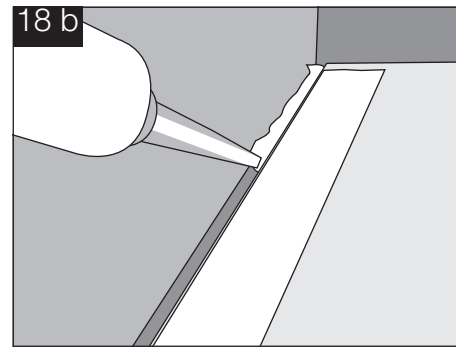


18. Upstand sealing

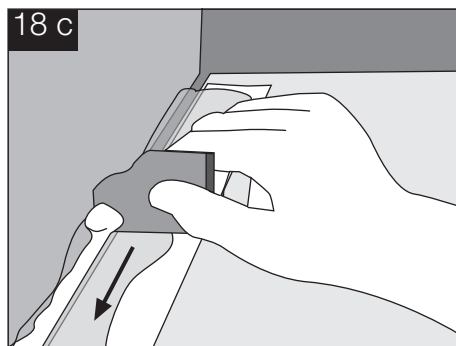
- a. Mask off the back edges of the worktops



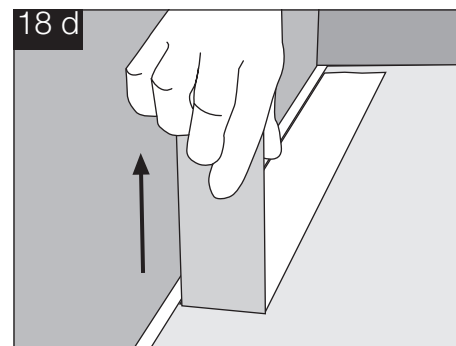
- b. Seal the joint between the back wall and the work surface with glass-silicone in the matching colour



- c. To remove protruding silicone, coat with water and detergent mix before using a suitable scraper



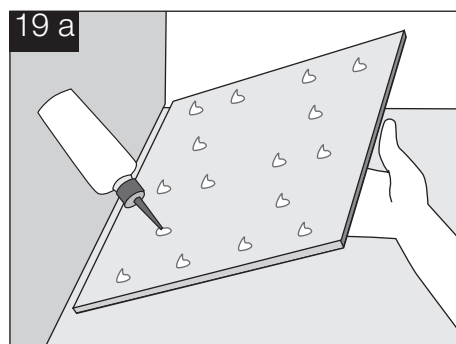
- d. Remove the masking tape



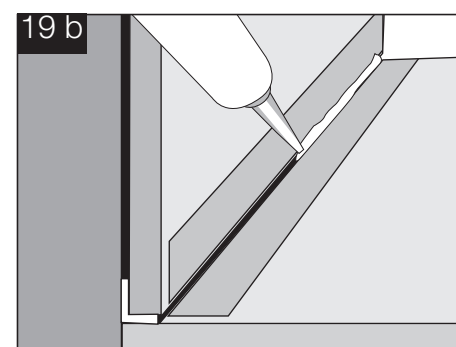
Backwalls, thickness approx. 6 mm

19. Direct application to the wall | 6 mm

- a. Apply additional silicone to the back of the panels and apply the panels to the wall



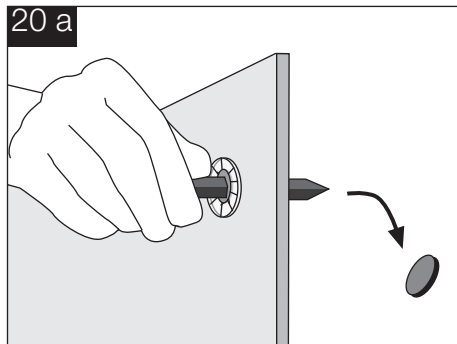
- b. Additionally seal the joints between the glass back wall and the worktops with silicone



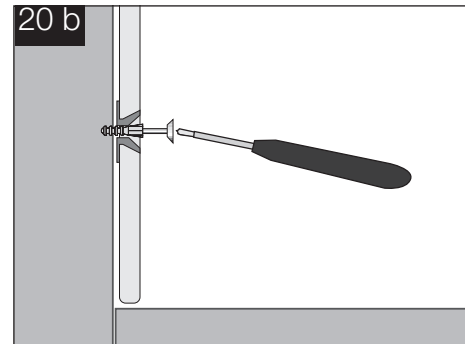
Backwalls, thickness approx. 6 mm

20. Direct wall-mounting with counterbore and fastening buttons | 6 mm

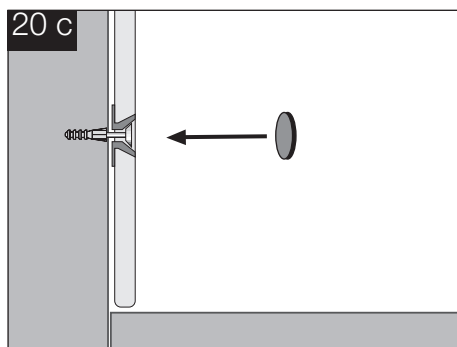
- a. Push out the silver covers from the back, using a sharp instrument



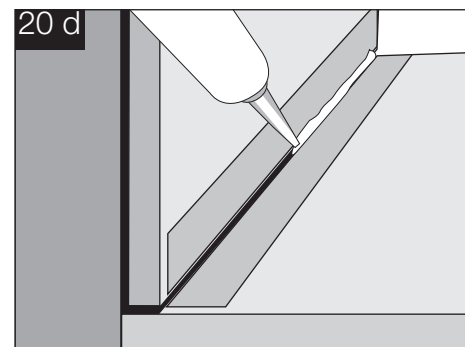
- b. Place the glass backwall against the wall and fix using screws



- c. Apply silver covers to the front of the bore holes



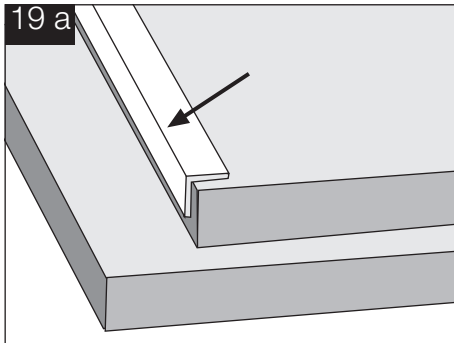
- d. Additionally seal the joints between the glass backwall and the worktops with silicone



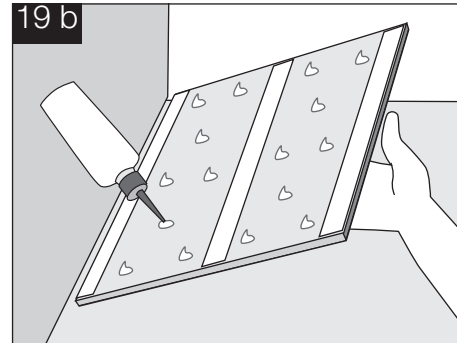
Backwalls, thickness approx. 12 mm

19. Direct application to the wall | 12 mm

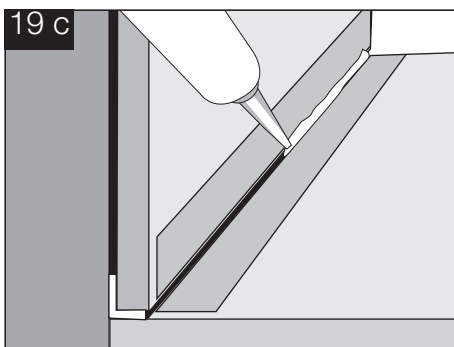
- a. Apply the angle silicone strip from corner to corner along the bottom. Remove the protective backer



- b. Also apply conventional glass-silicone in the colour of the wall to the backs of the panels and bond the panels to the wall



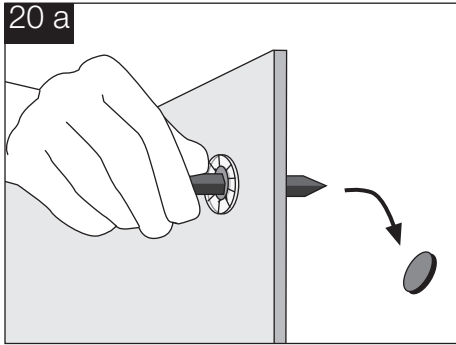
- c. Also seal the joints between the glass back wall and the work surface with glass-silicone in the matching colour



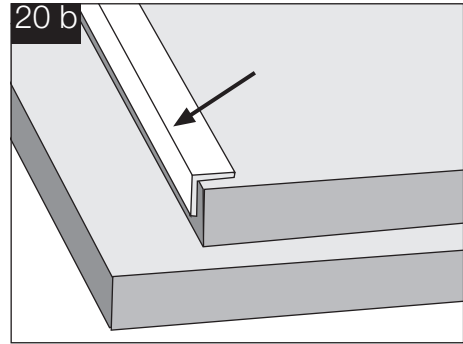
Backwalls, thickness approx. 12 mm

20. Direct wall-mounting with counterbore and fastening buttons | 12 mm

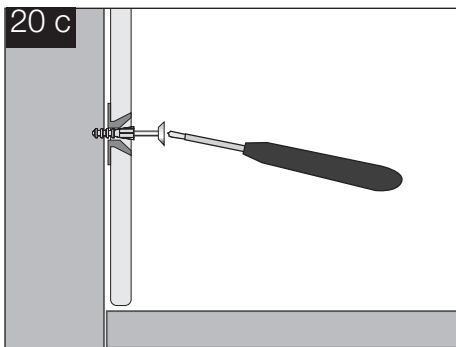
- a. Push out the silver covers from the back, using a sharp instrument



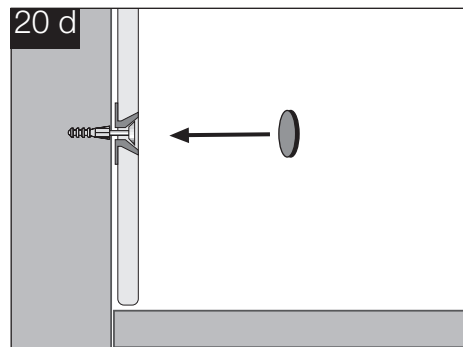
- b. Apply the provided, self-adhesive silicone strip from corner to corner along the bottom. Remove the protective backer



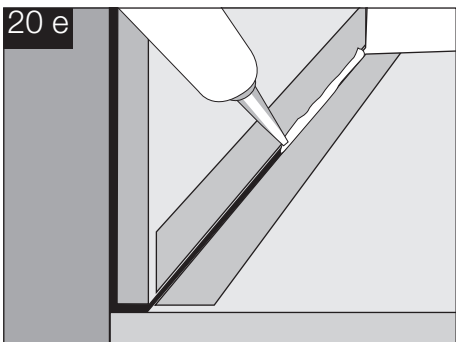
- c. Place the glass backwall against the wall and fix using screws



- d. Apply silver covers to the front of the bore holes



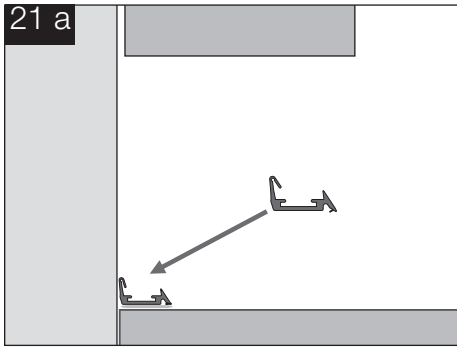
- e. Additionally seal the joints between the glass backwall and the worktops with silicone



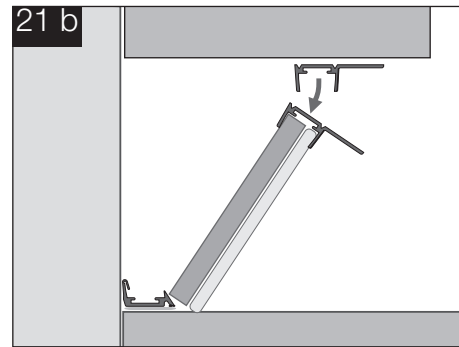
Backwalls, thickness approx. 16 mm

21. Fixing of silver line installation profiles | 16 mm

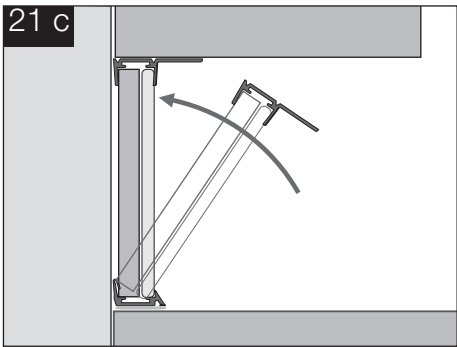
- a. Attach the base profile to the worktop with glass-silicone



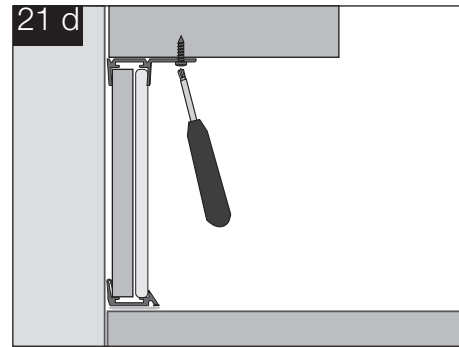
- b. Attach the upper profile to the glass back-wall and the carrier plate



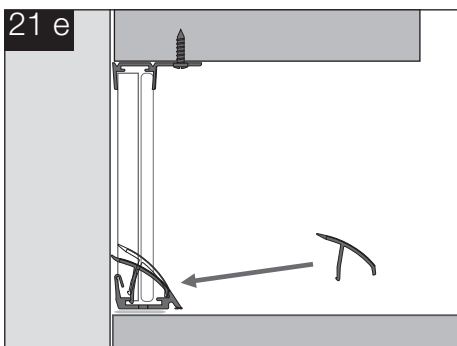
- c. Place the glass backwall and the carrier plate into the base profile and align vertically



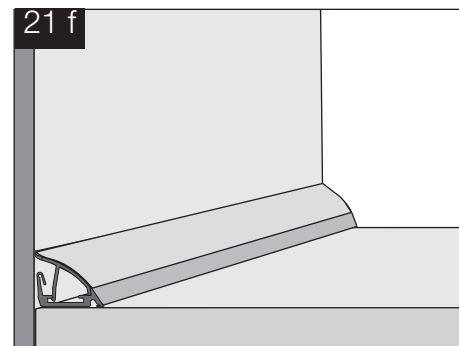
- d. Screw the upper profile tightly to the bottom of the wall unit



- e. Apply the sealing cover profile to the wall



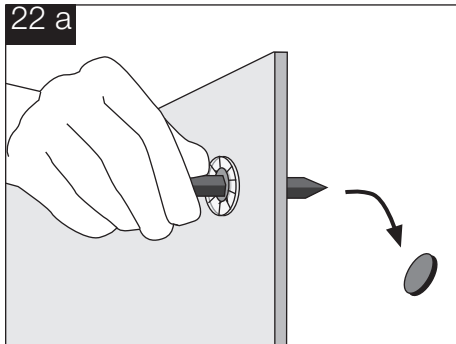
- f. Cover profile can also be used as a wall-connection profile



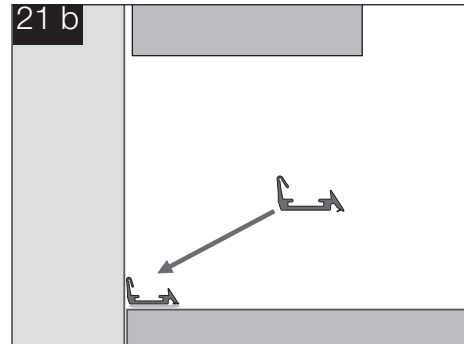
Backwalls, thickness approx. 16 mm

22. Fixing of silver line-mounting profiles and anchor point hole spacing | 16 mm

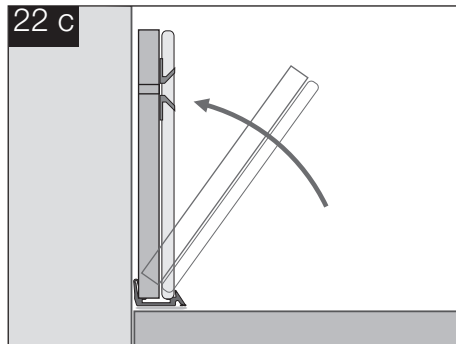
- a. Push out the silver covers from the back, using a sharp instrument



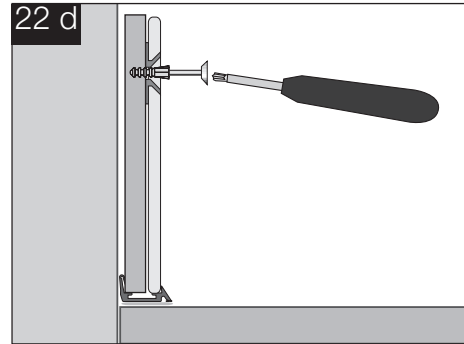
- b. Attach the base profile to the worktop with glass-silicone



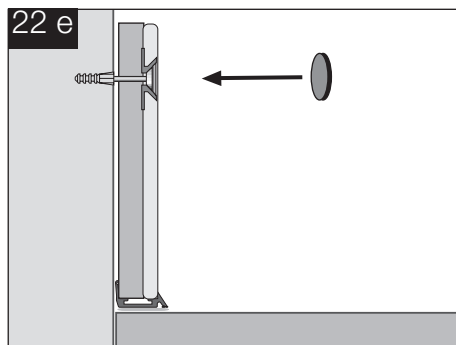
- c. Place the glass backwall and the carrier plate into the base profile and align vertically



- d. Screw the back panel to the wall using the bore holes



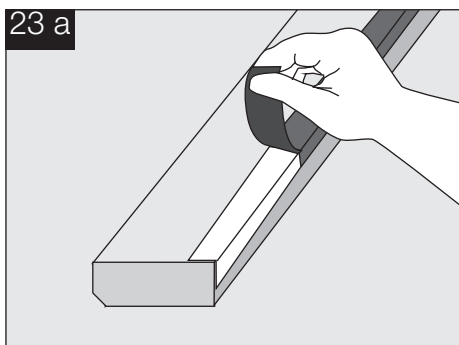
- e. Apply silver covers to the front of the bore holes



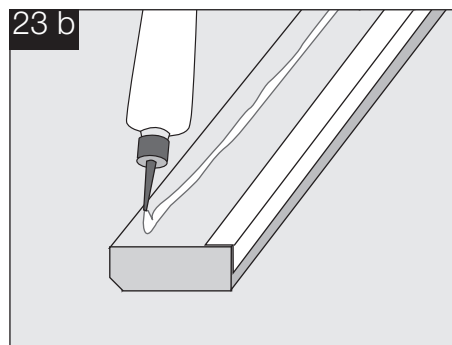
Wall connection profiles

23. Wall connection profiles 12mm

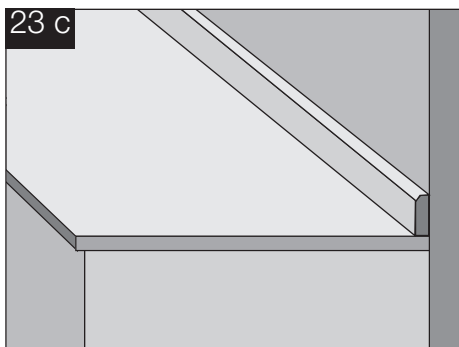
- a. Apply the silicone strip from corner to corner along the bottom. Remove the protective backer



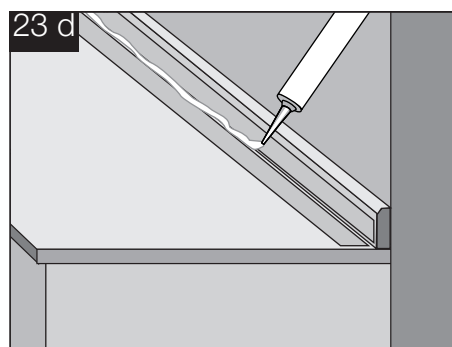
- b. In addition, apply glass-silicone to the back of the wall connection profiles



- c. Mount the wall connection profiles to the wall

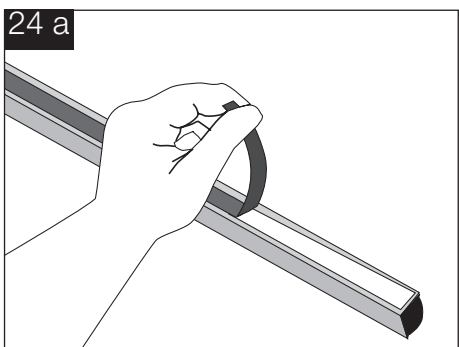


- d. Additionally seal off the gap between the wall connection profile and the work surface with glass-silicone



24. Wall connection profiles select line

- a. Remove the protective backer from the self adhesive tape



- b. Mount the wall connection profiles to the wall

