



Installation instructions Laminate



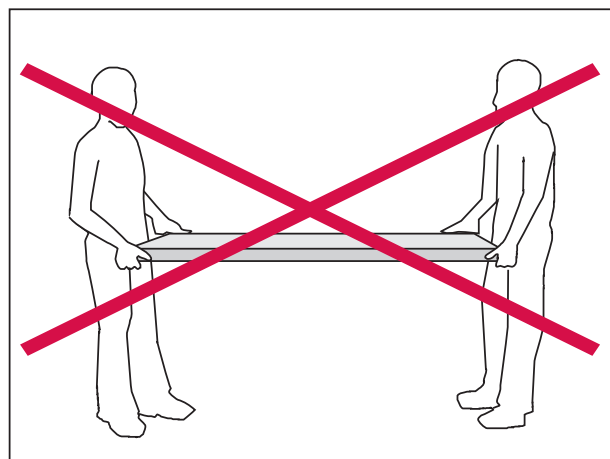
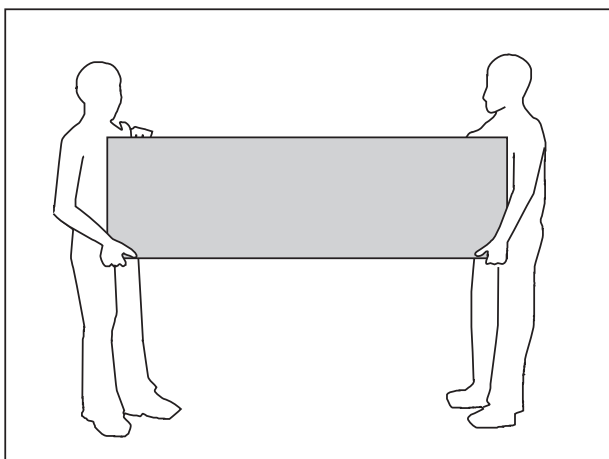
Installation instructions Laminate

Herewith please find our assembling instructions which enable you to install your Lechner products by yourself. These instructions will make the installation of worktops and back walls quick and easy.

Process the laminate worktops with the standard wood / rapid steel drill bits, saws or mills.

Worktop-overhangs exceeding 25 cm need to be supported.

How to carry Lechner products correctly



Only carry worktops and back walls vertically

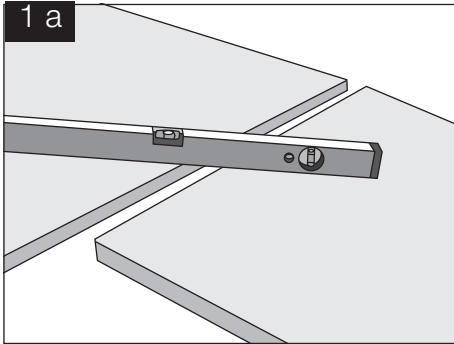
INDEX

Worktops, thickness approx. 18 mm	4-8
Worktops, thickness 40/60 mm	9-13
Backwalls, thickness approx. 18 mm	14
Wall connection profiles	15
Supports and side frames	16-17

Worktops, thickness approx. 18 mm

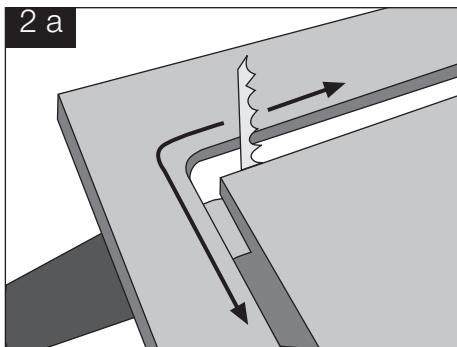
1. Worktop installation

- a. Position the worktops on top of the aligned base units. Compensate differences in height with a shim

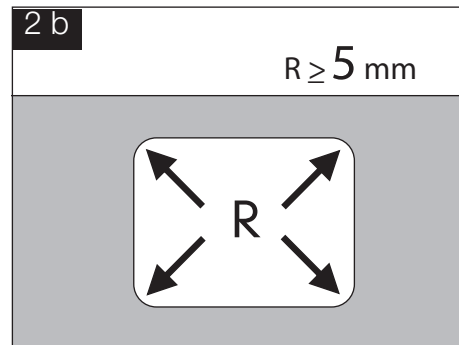


2. Cut-outs on site

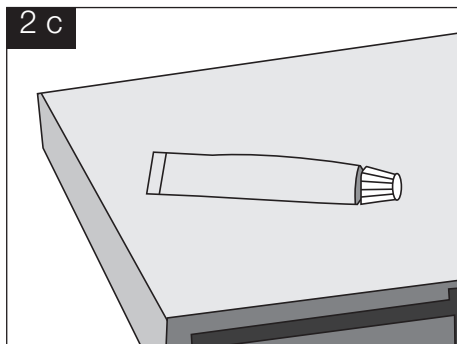
- a. Remove the pre-milled carrier-plates from the bottom by using a jigsaw blade or hand-held circular saw.



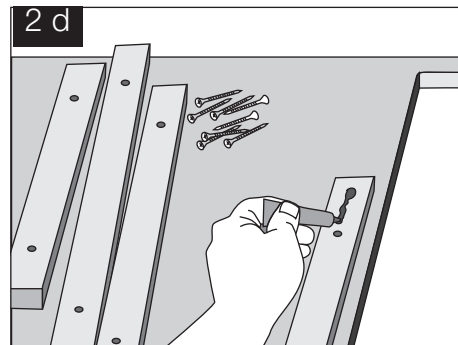
- b. Minimum radius with all cut-outs at least 5 mm



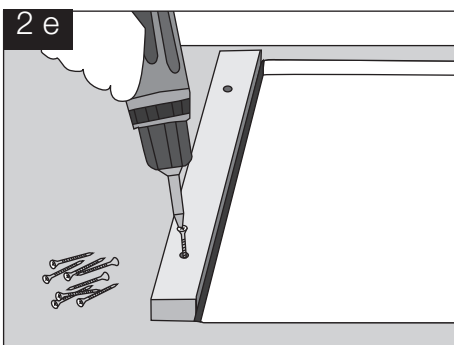
- c. Pierce the nozzle of the provided sealing material



- d. Apply the provided sealing material to the solid wood strips

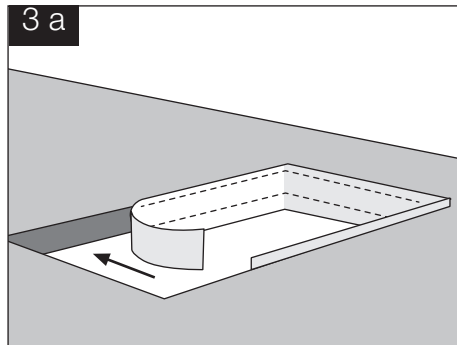


- e. Affix the solid wood strips to the underside of the plate, using the provided screws

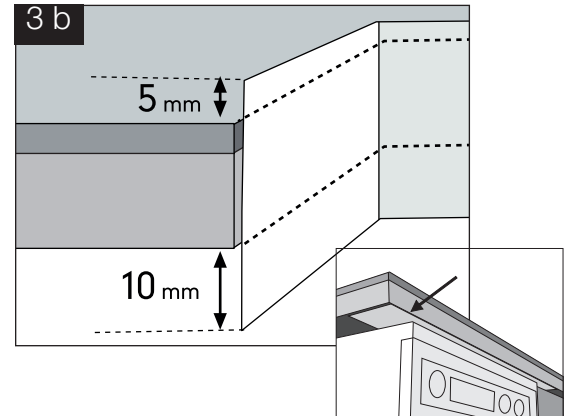


3. Factory produced cut-outs - vapour strip

- a. Apply tape along the entire surface of the cut-out

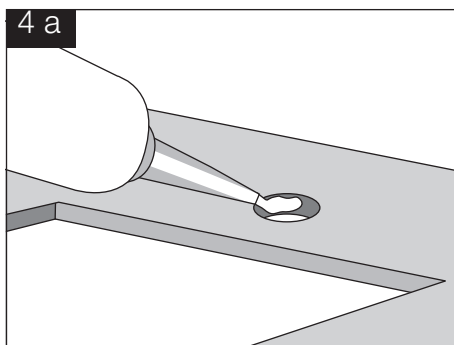


- b. Apply the vapour strip supplied by the appliance manufacturer. Apply aluminium adhesive tape below vapour panel



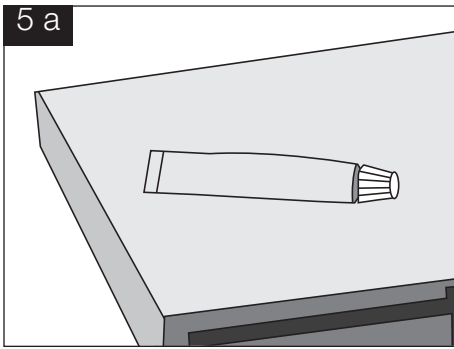
4. Fittings

- a. Make tap-hole drillings watertight using silicone. Then install the taps

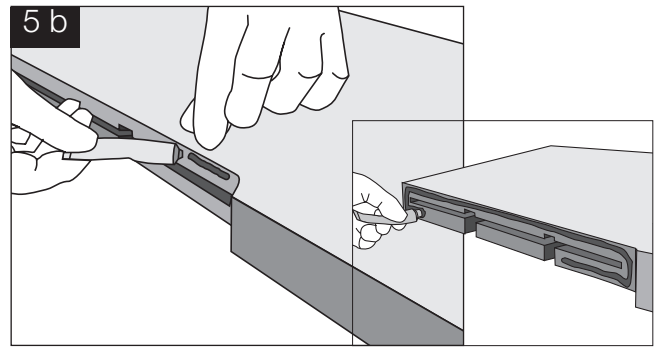


5. Butt joint fixing

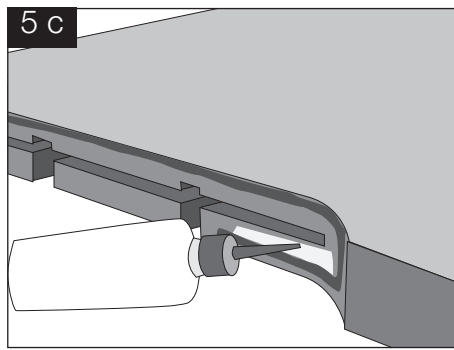
- a. To simplify the cleaning, the joint can be masked with duct tape prior to applying sealants



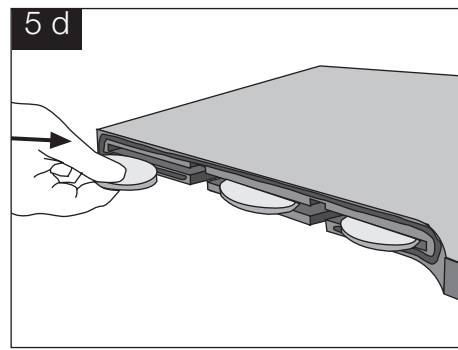
- b. Apply the sealing material to the worktop joints on one side in an even manner and end to end



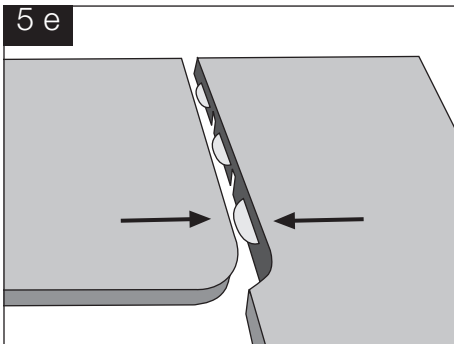
- c. Apply PVA glue to the lower side of the corner joint



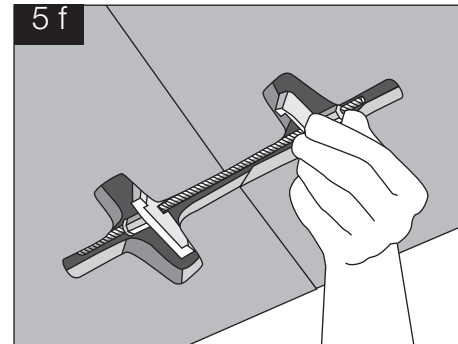
- d. Position the worktop bolt in the groove



- e. Join worktops

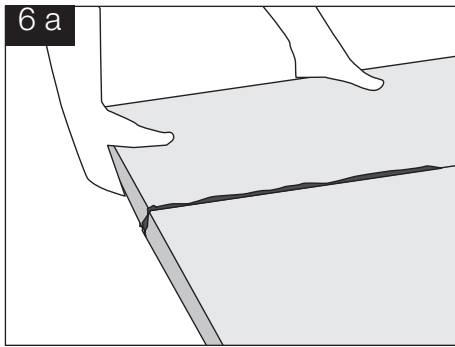


- f. Loosely position the connection fittings in the groove of the worktops joints

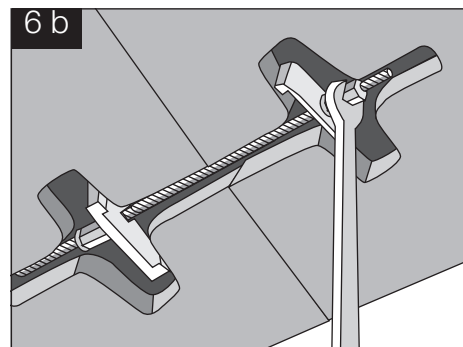


6. Joint alignment

a. Align and position the worktops

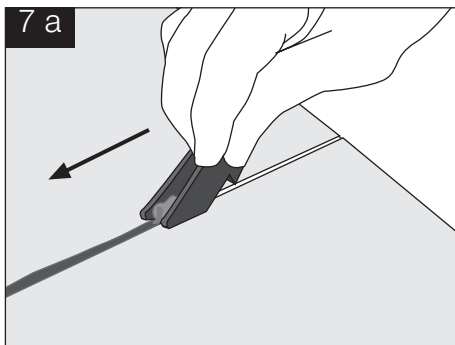


b. Tighten the worktop bolts

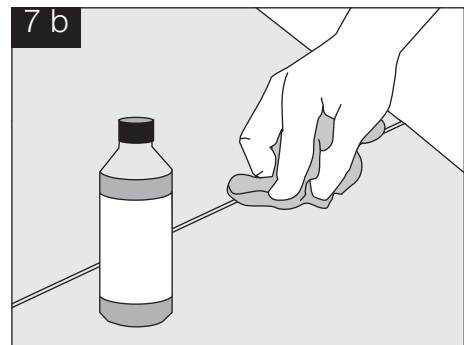


7. Cleaning the joints

a. Remove protruding sealing material by using the provided scraper

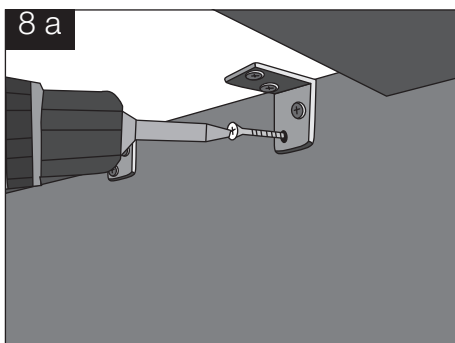


b. Thoroughly clean the corner joint



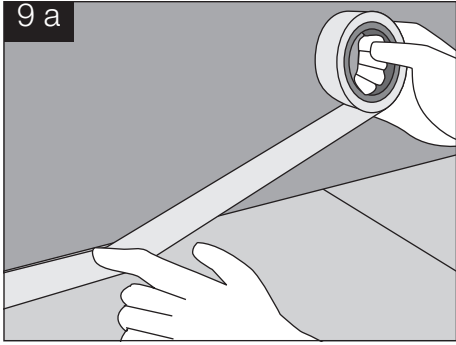
8. Fixing the worktops to the base units

a. Mount the provided mounting brackets to the inner parts of the body

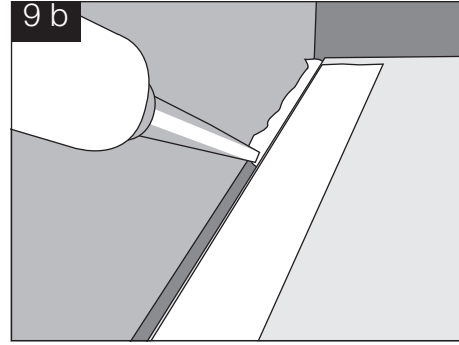


9. Upstand sealing

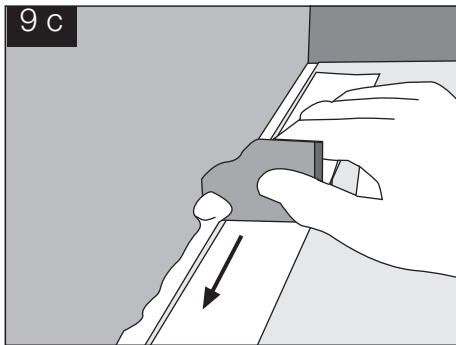
a. Mask off the back edges of the worktops



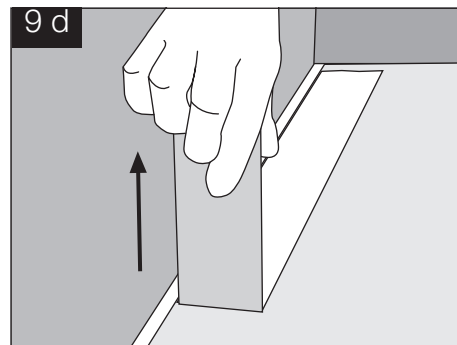
b. Seal the back edges with silicone



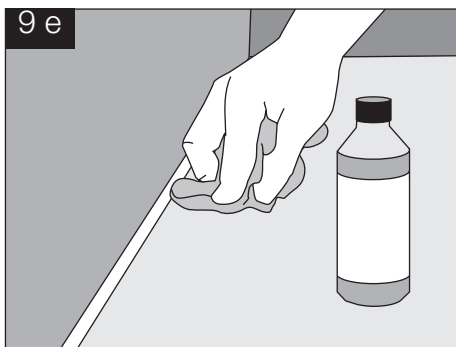
c. Remove protruding silicone with a suitable scraper



d. Remove the masking tape



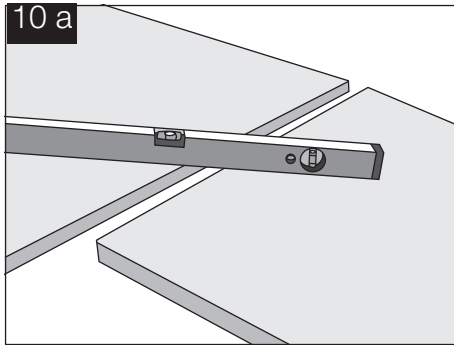
e. Clean the rear sides of the worktops



Worktops, thickness approx. 40/60 mm

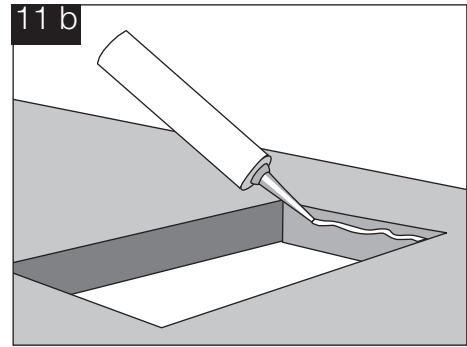
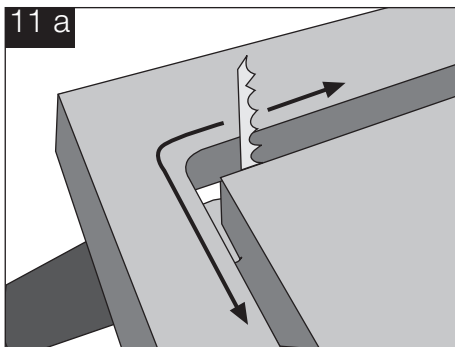
10. Worktop installation

- a. Position the worktops on top of the aligned base units. Compensate differences in height with a shim

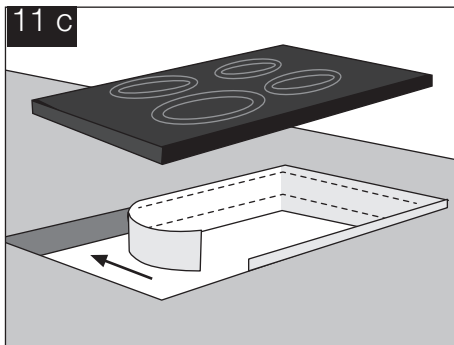


11. Cut-outs on site

- a. Remove the pre-milled carrier-plates from the bottom by using a jigsaw blade or hand-held circular saw. Minimum radius with all cut-outs at least 5 mm
- b. Seal cut-out edges to make them watertight

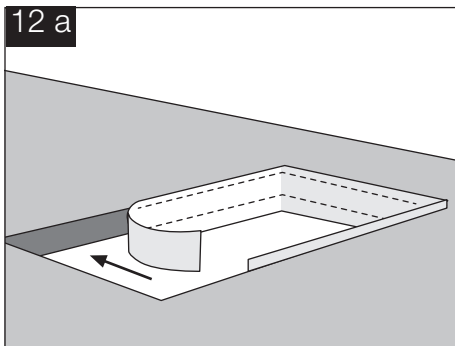


- c. Apply tape along the entire surface of the cut-out

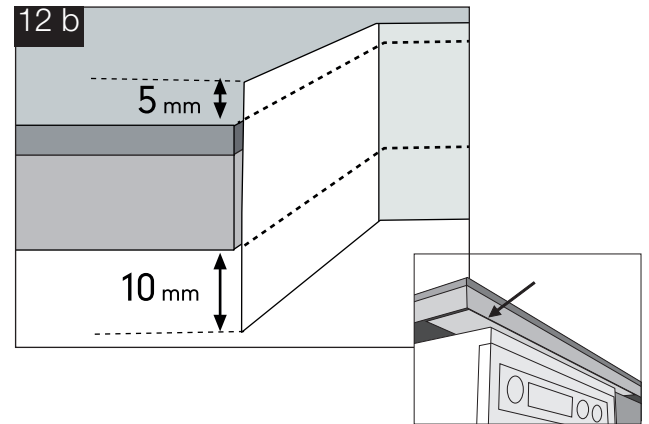


12. Factory produced cut-outs - vapour strip

- a. Apply tape along the entire surface of the cut-out

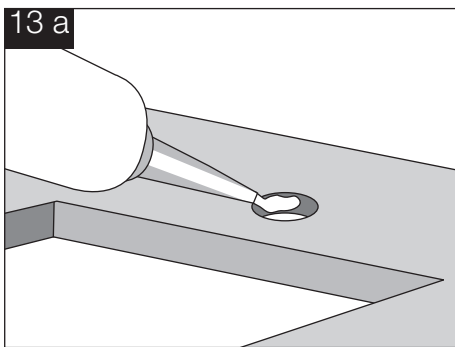


- b. Apply the vapour strip supplied by the appliance manufacturer. (Possibly pre-drill the base board before applying the dishwasher steam plate.) Apply aluminium adhesive tape below vapour panel



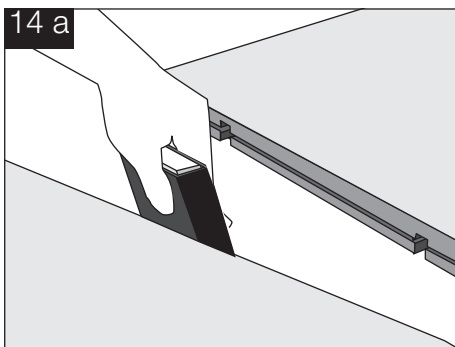
13. Fittings

- a. Make tap-hole drillings watertight using silicone. Then install the taps

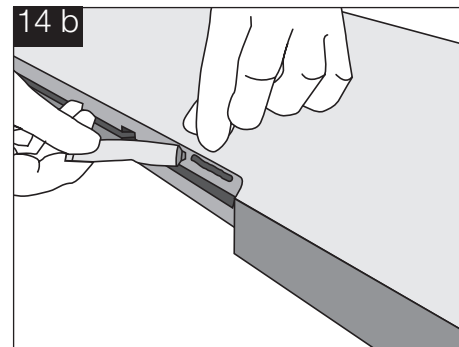


14. Butt joint fixing

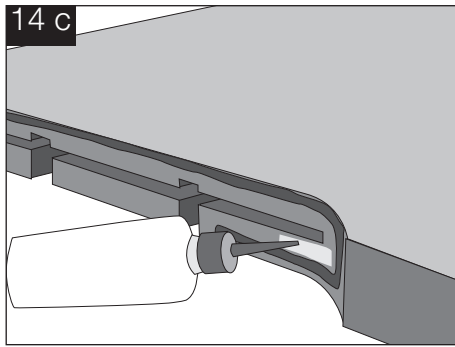
- a. Smooth protruding wood fibres with sand paper



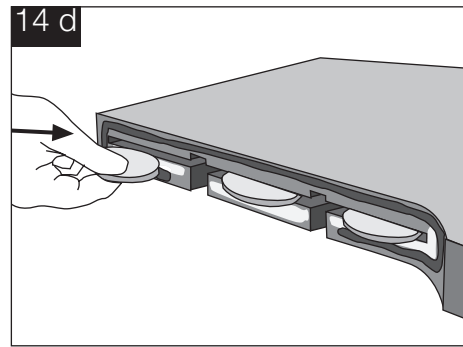
- b. Apply the sealing material to the worktop joints on one side in an even manner and end to end



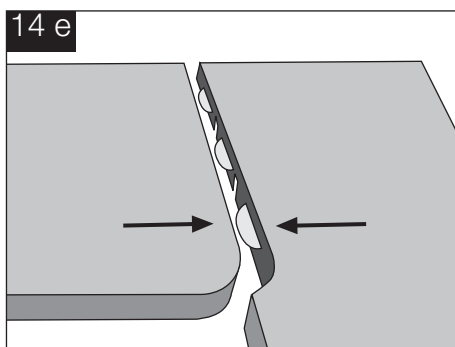
- c. Apply PVA glue to the lower side of the corner joint



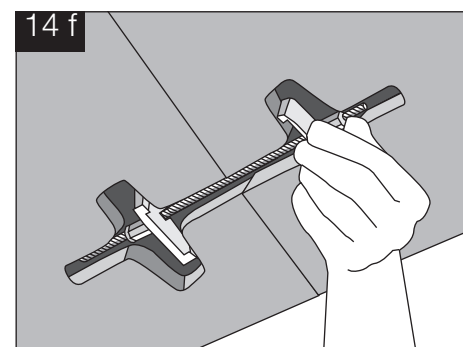
- d. Position the worktop bolts in the groove



- e. Join worktops

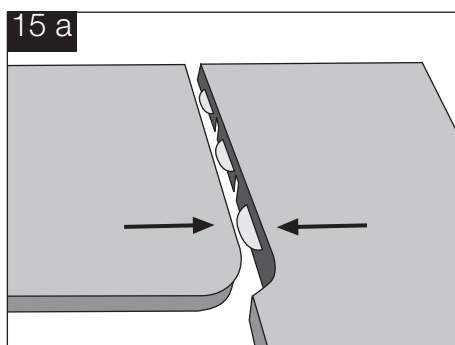


- f. Loosely position the connection fittings in the groove of the worktops joints

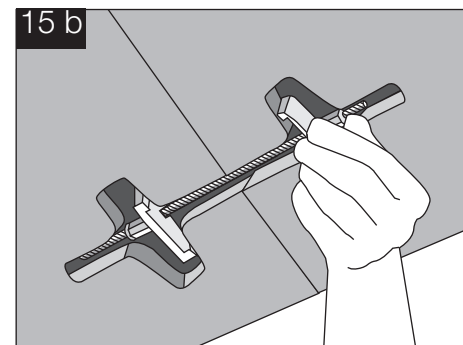


15. Joint alignment

- a. Align and position the worktops

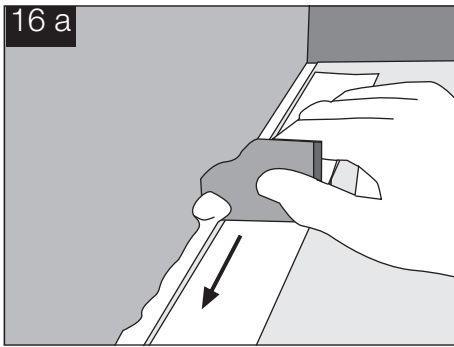


- b. Tighten the worktop bolts

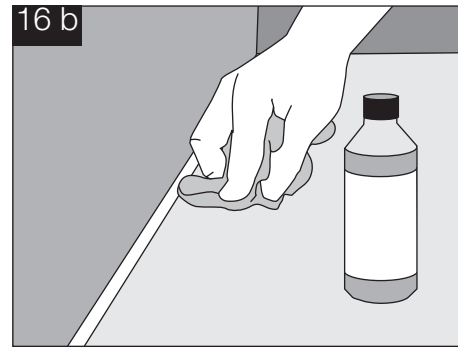


16. Cleaning the joints

- a. Remove protruding sealing material by using the provided scraper

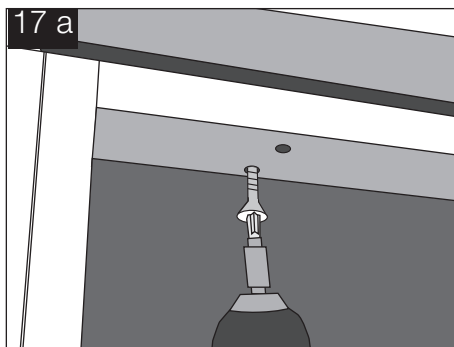


- b. Thoroughly clean the corner joint



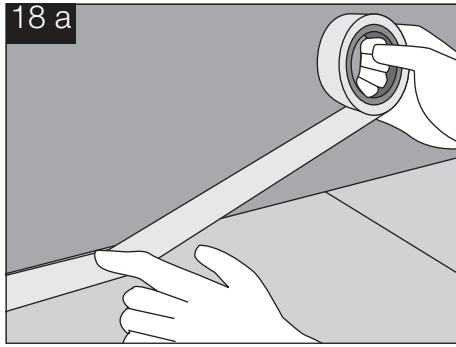
17. Fixing the worktops to the base units

- a. Fix the worktops at various points through the top rail / surface of the base units (worktops may have to be predrilled)

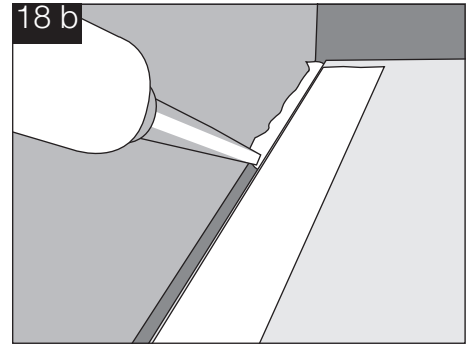


18. Upstand sealing

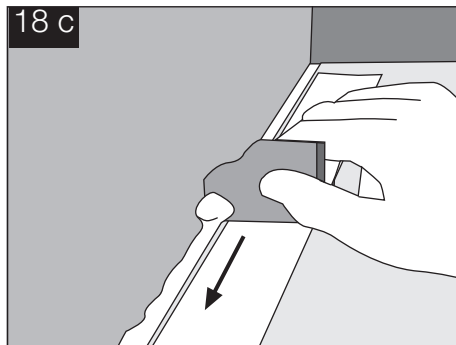
- a. Mask off the back edges of the worktops



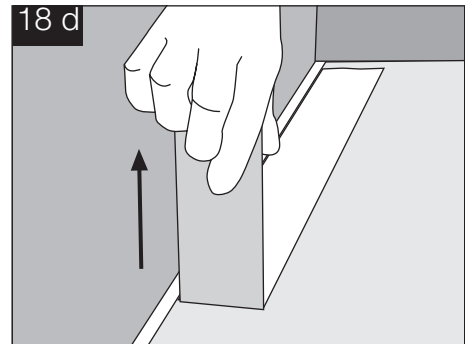
- b. Seal the back edges with silicone



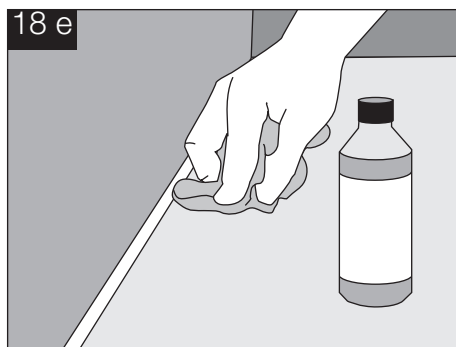
- c. Remove protruding silicone with a suitable scraper



- d. Remove the masking tape



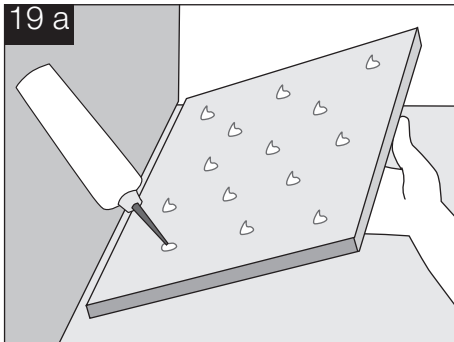
- e. Clean the rear sides of the worktops



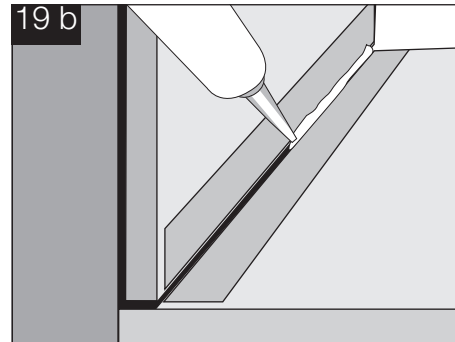
Backwalls, thickness approx. 18 mm | Do not mount back panels behind gas hobs!

19. Direct application to the wall

- a. Apply silicone to the rear part of the panels and stick the panels to the wall

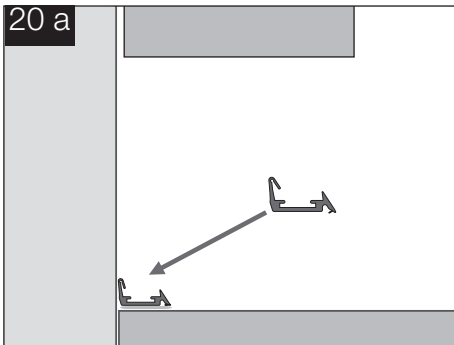


- b. In addition to this: Also seal off the joint between the back panel and working top with silicone

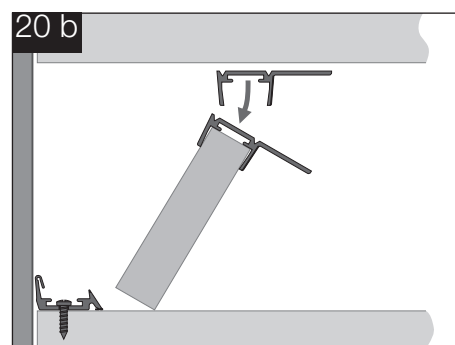


20. Affix with the silver line mounting profile

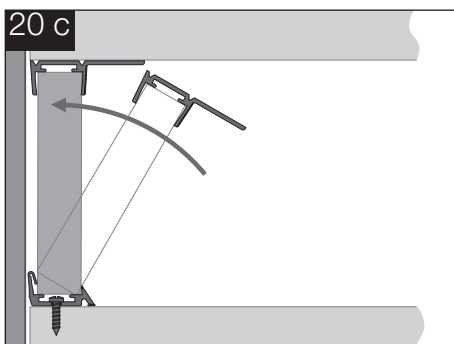
- a. Attach the base profile to the worktop with silicone



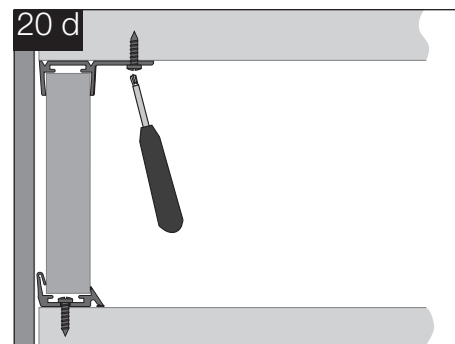
- b. Position the assembly top profile on the back panel



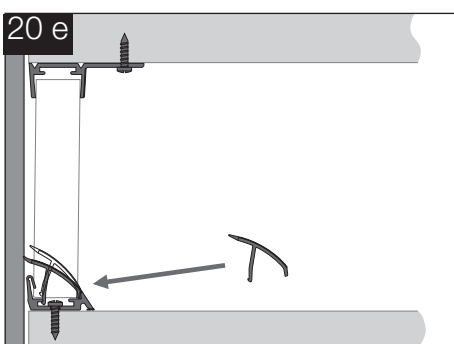
- c. Position the back panel in the mounting base and align it perpendicularly



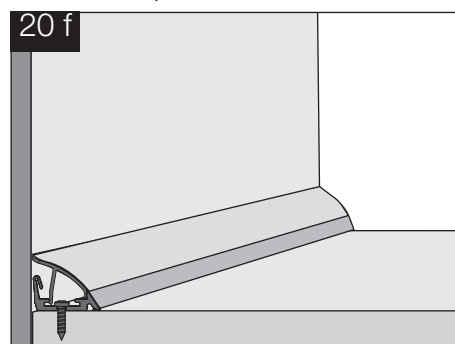
- d. Screw the upper profile tightly to the bottom of the wall unit



- e. Apply the sealing cover profile to the wall



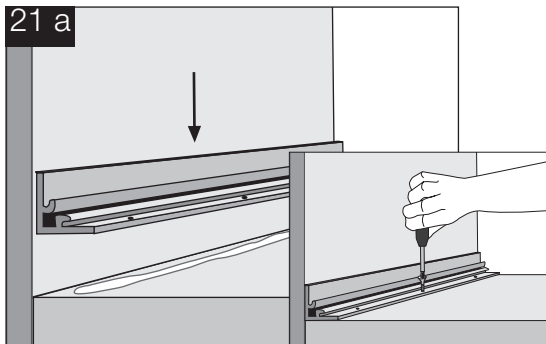
- f. Cover profile can also be used as a wall-connection profile



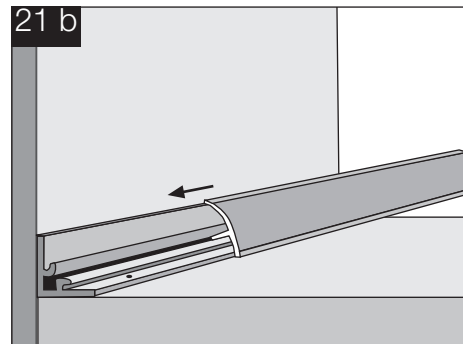
Wall connection profiles

21. Basic line / extra line

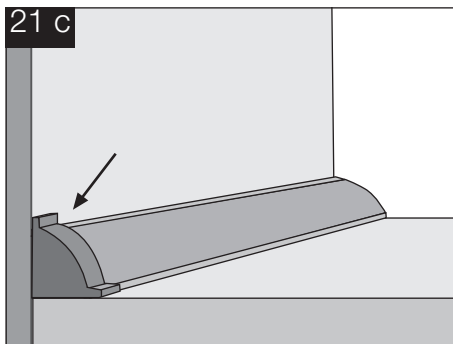
- a. Use silicone to stick the mounting base to the worktop and then screw it down



- b. Insert the cover profile into the mounting base profile

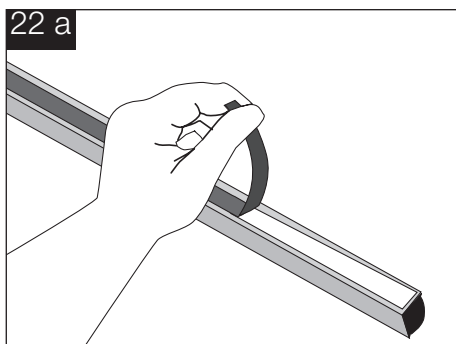


- c. Place covering caps onto the corners

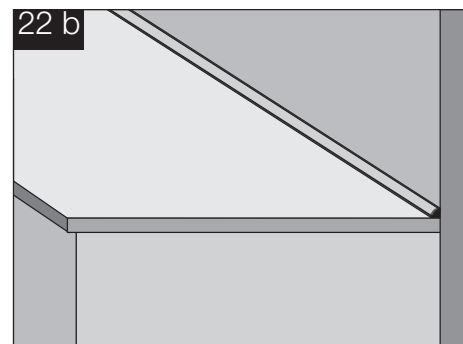


22. Select line

- a. Remove the protective backer from the self adhesive tape



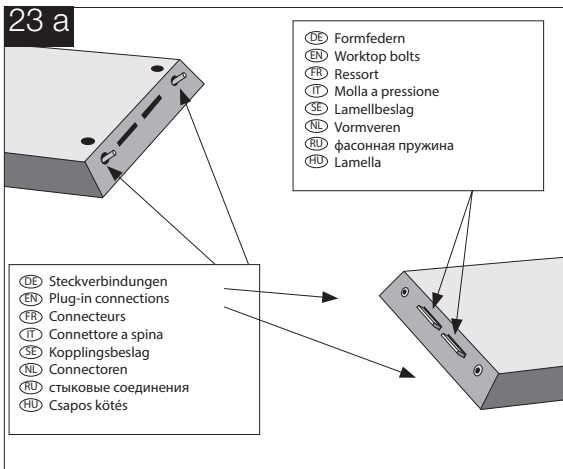
- b. Mount the wall connection profiles to the wall



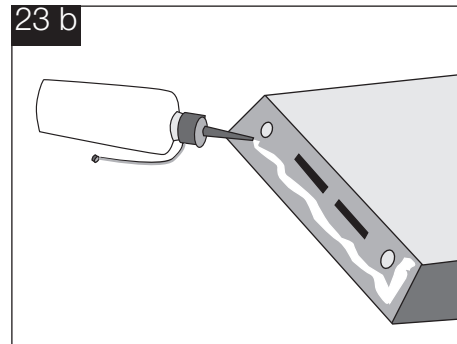
Supports and side frames

23. Fixing of the supports and side frames

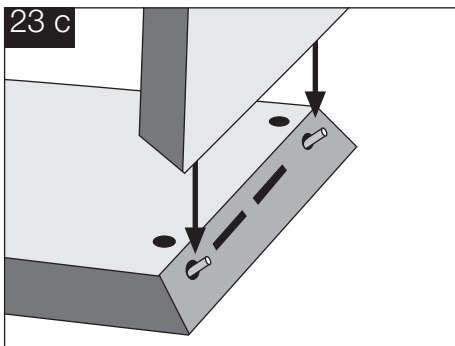
a. Fittings are factory mounted (with end to end connections: Without worktop bolts).



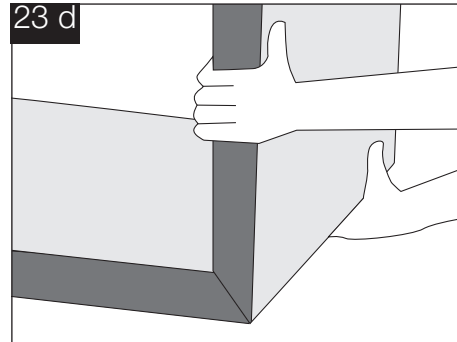
b. For a permanent mitred joint apply PVA glue



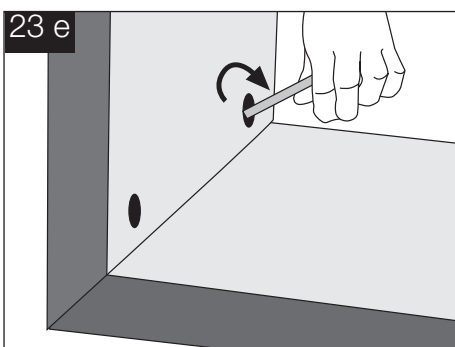
c. Fix the screw-in bolts into the screw-in dowels. A snap can be heard when aligned



d. Fit the workpieces. Manually align the connections



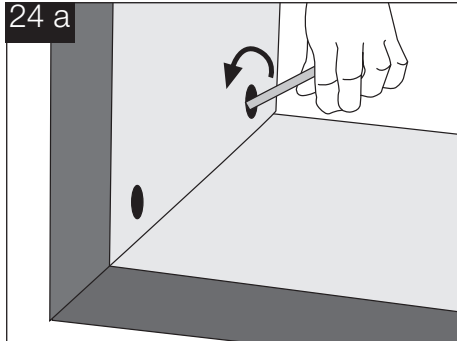
e. Tighten the clamping system with hexagon screw driver



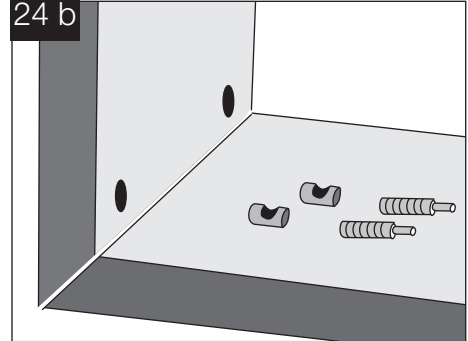
24. Disassembly of the supports and side frames

Disassembly of the fittings is not recommended as the workpieces' accuracy of fit is factory controlled!

- a. Completely loosen the grub screws by using an allen wrench and separate the workpieces from one another



- b. Stick in the fitting elements



- c. Position the screw-on bolts within the hole in its sleeve and affix with grub screws

